

Strato:

LINNEN

Matte & grainy

- **INTERIOR USE ONLY**
Recommended for areas larger than 100 sqf.



STL

STL 901 – 913

Linnen is designed to add depth, quality and character to any room, it creates a rich look that is also subtle and soft on the eyes. Not only does our texture paint add an aesthetic element to your walls, it also provides a practical benefit by hiding imperfections and flaws.

Made from high-quality materials, our texture paint is available in a range of colors, allowing you to achieve the perfect look for your space. Our paint is also easy to apply, making it the perfect choice for both professional painters and DIY enthusiasts.

Appearance

Low Sheen			High Sheen
Smooth Texture			Rough Texture
Matte			Metallic

Features

* Interior use only.



Low VOC
& Odor



Green Choice, Water
Based & Eco-friendly



Formaldehyde
& Lead Free



Crack
Resistant



Anti-chalking &
Efflorescence



Easy Application
& DIY Friendly



Applicable
on Ceiling



Easy to
Touch Up



Easy
Maintenance



Matte
Finishing

STL-901
Ivory Cream



STL-901

IVORY
CREAM

STL-903 ▶
Sandy Beige

STL-902

MAGNOLIA
CREAM

STL-903

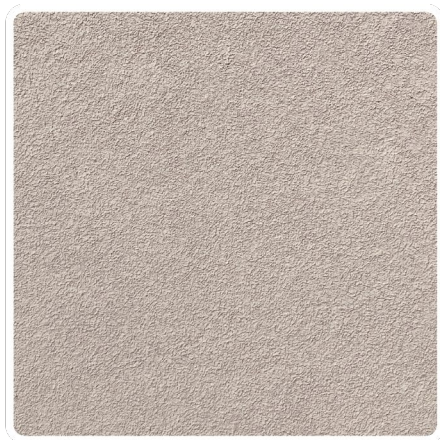
SANDY
BEIGE

◀ **STL-902**
Magnolia Cream

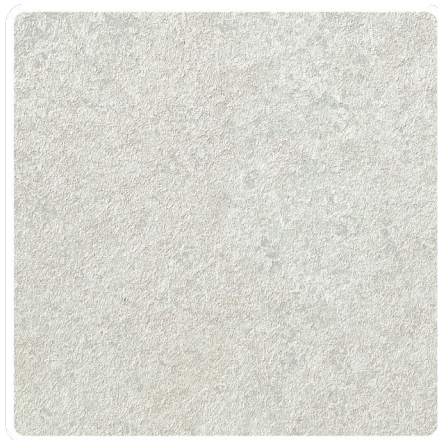


STL-904

RIVER
GREY



▲ **STL-904**
River Grey



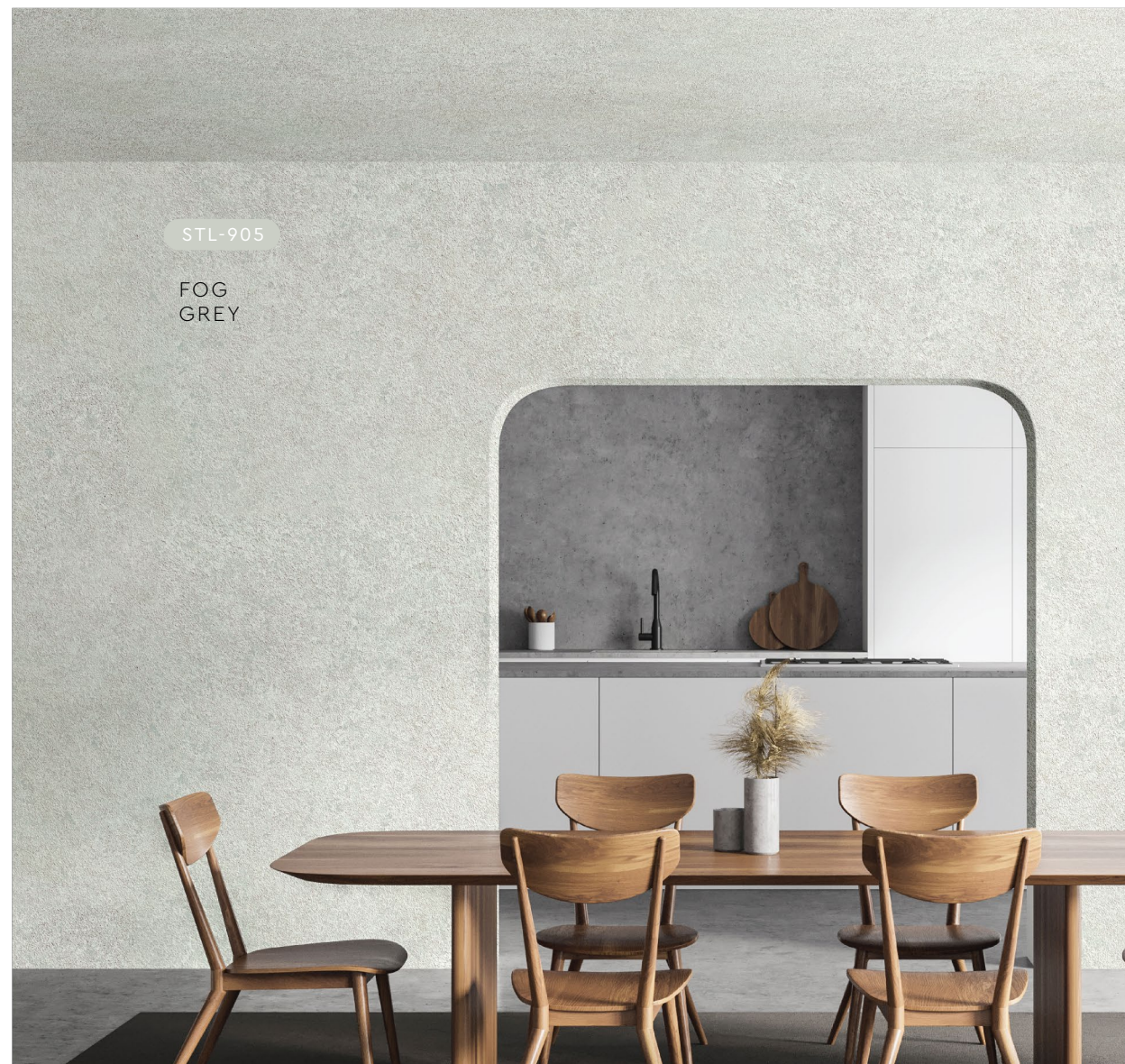
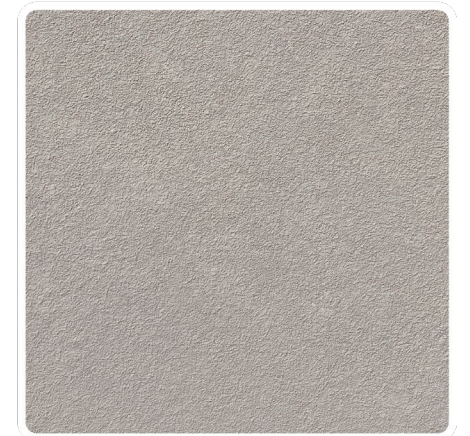
▲ **STL-905**
Fog Grey



STL-906

FROST
GREY

STL-906 ▶
Frost Grey



STL-905

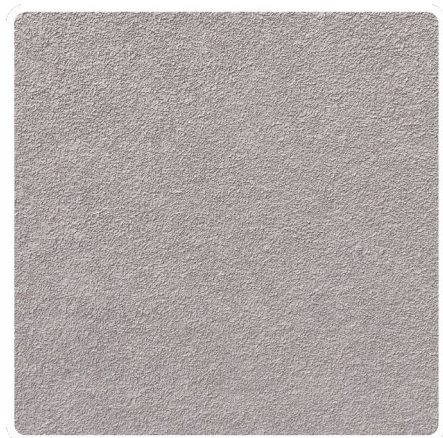
FOG
GREY



▲ **STL-907**
Thunder Grey

STL-907

THUNDER
GREY



◀ **STL-908**
Smokey Grey

STL-908
SMOKEY
GREY

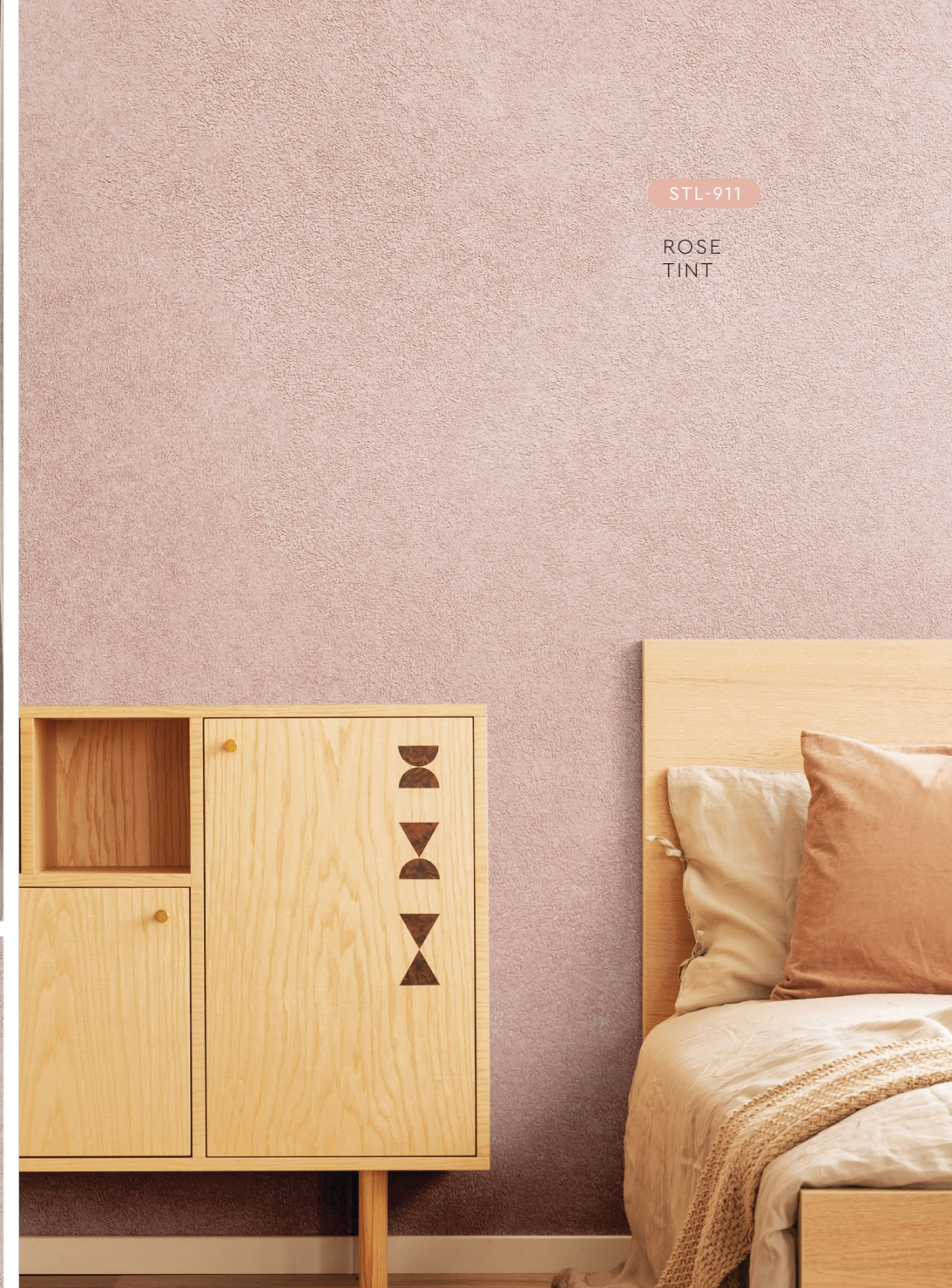


▲ **STL-909**
Lead Grey

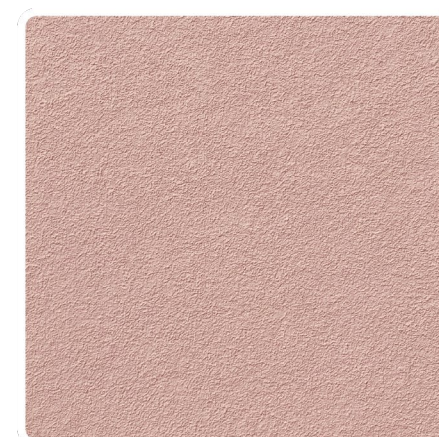
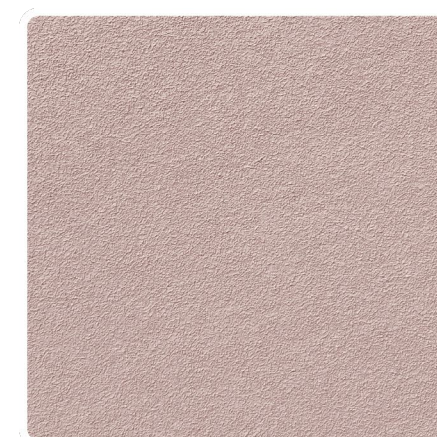
STL-909
LEAD
GREY



STL-910
TAUPE
CREPE



STL-911
ROSE
TINT



▲ **STL-910**
Taupe Crepe

▲ **STL-911**
Rose Tint



STL-912

BURNT
ORANGE

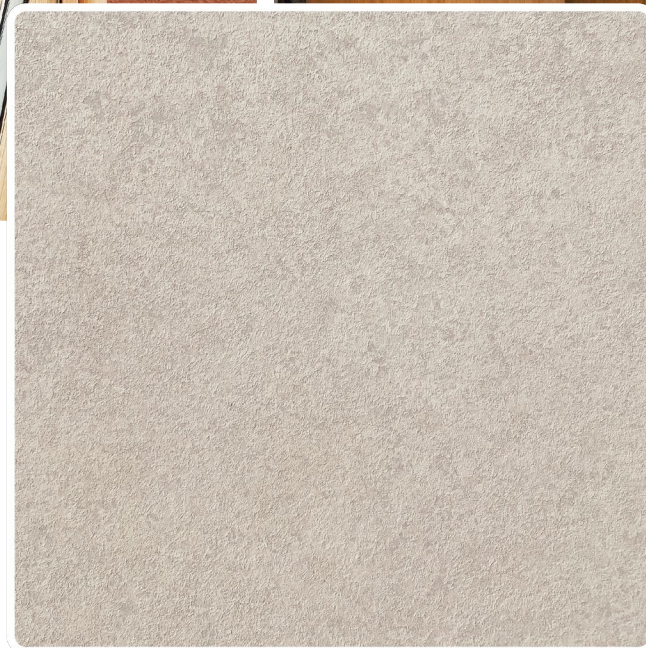


▲ **STL-912**
Burnt Orange



STL-913

CRAFT
GREY



▲ **STL-913**
Craft Grey

Application Technique

APPLICATION VIDEO



Preparation:

- Cover the edges of surface that won't be painted by masking it with tape, paper or plastic.
- Clean up the wall surface to ensure it is free from dirt and dust.

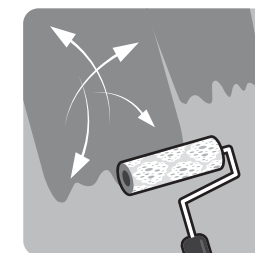


1 Primer

Roll 2 layers of primer on the entire surface. Allow 30 minutes to dry between the layers.

(The primer can be diluted with maximum 5% of clean water)

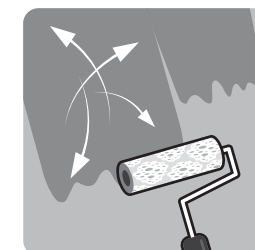
Tool: Paint Roller



2 Texture Coat

Texture Coat (First Layer)

Roll texture coat randomly on the surface. Ensure the whole surface is covered. Let dry.



Texture Coat (Second Layer)

Roll second layer of texture coat randomly on the surface. Let dry.

Tool: Linnen Texture Roller

IMPORTANT:

Color may vary on application technique & amount of material used.



Packing Data

1 L	Primer	Coverage (per set)	9 - 10 sqm (Application on Wall & Ceiling)
2 L	Texture Coat		

* Linnen Texture Roller is sold separately

Tools:



Paint
Roller



Linnen
Texture Roller