

STRATO® Merino

SMM

SMM 801 – 814

A striking textured metallic pattern that is linen like.
Strato® Merino not only can suit elegant but also rustic designs.

Appearance

Low Sheen		High Sheen
Smooth Texture		Rough Texture
Matte		Metallic

Features



Low VOC
& Odor



Green Choice, Water
Based & Eco-friendly



Formaldehyde
& Lead Free



Easy Application
& DIY Friendly



Applicable
on Ceiling



Easy to
Touch Up



Easy
Maintenance



Metallic
Finish

• Interior use only



SMM-801 Crystal White



SMM-802 Vanilla White



SMM-803 Light Beige



SMM-804 Dewy Rose



SMM-805 Peach Passion



SMM-806 Dusty Mauve



SMM-807 Tippy Taupe



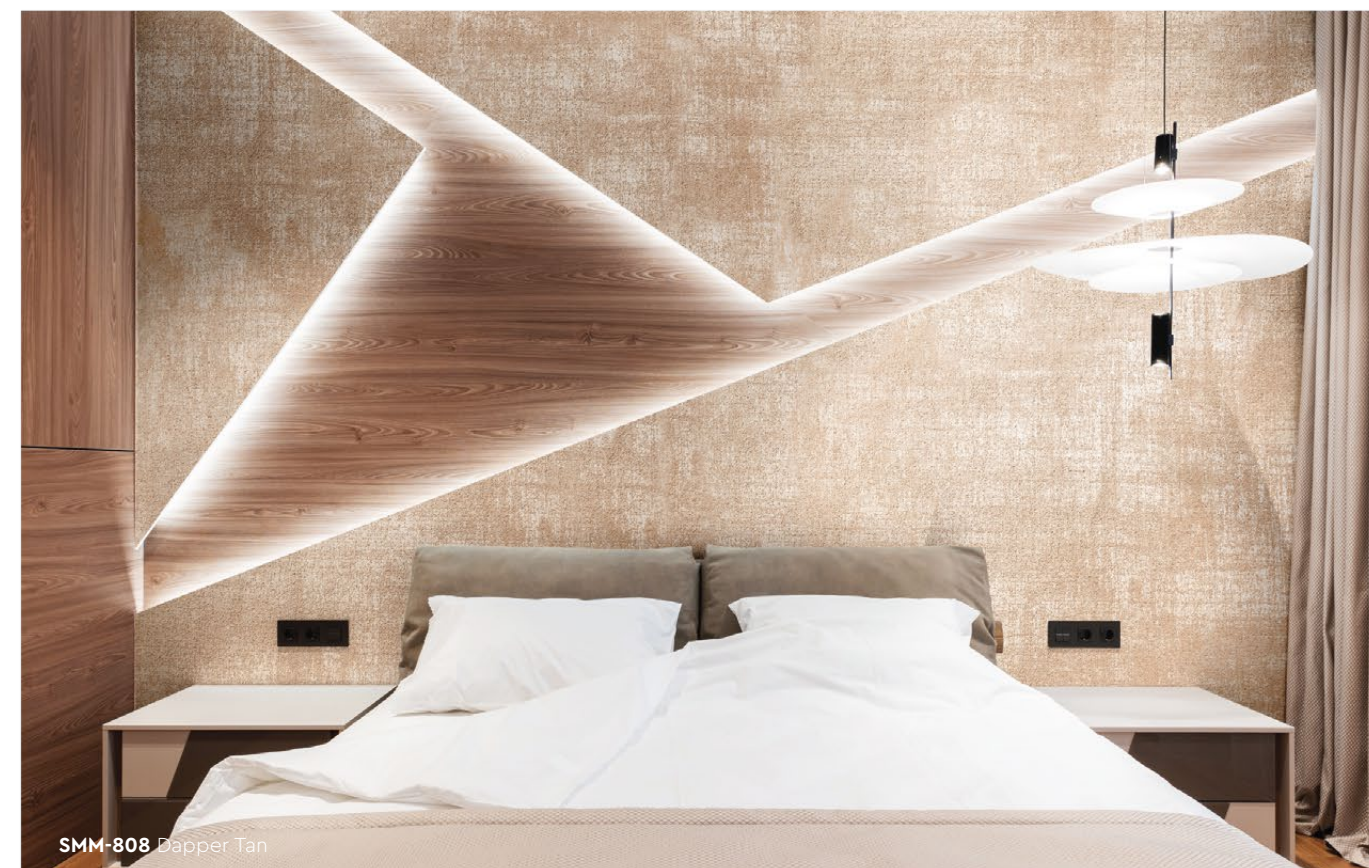
SMM-808 Dapper Tan

All color shown are as close to the actual Suzuka® Strato® colors as modern printing techniques permit, nonetheless, there are still color/tone differences.

We highly recommend seeing actual samples before ordering.



SMM-811 Frost Grey



SMM-808 Dapper Tan



SMM-811 Frost Grey



SMM-801 Crystal White



SMM-810 Lilac Grey



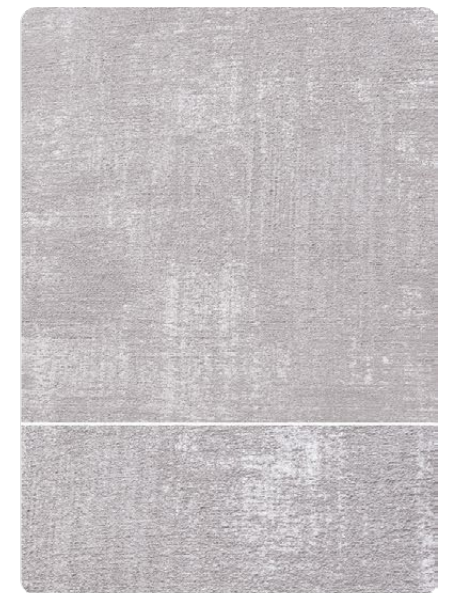
SMM-805 Peach Passion

All color shown are as close to the actual Suzuka® Strato® colors as modern printing techniques permit, nonetheless, there are still color/tonne differences.

We highly recommend seeing actual samples before ordering.



SMM-809 Lime Grey



SMM-810 Lilac Grey



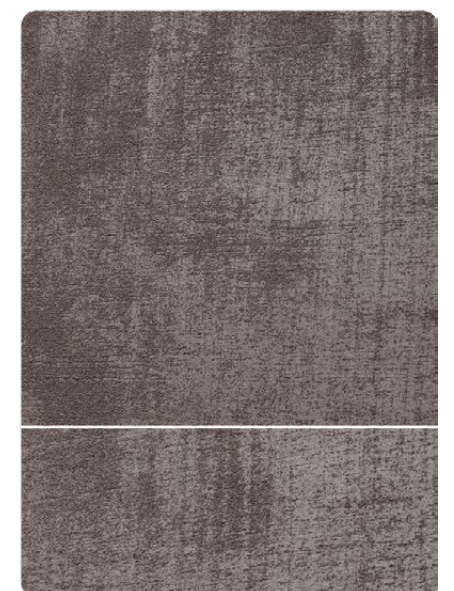
SMM-811 Frost Grey



SMM-812 Suede Grey



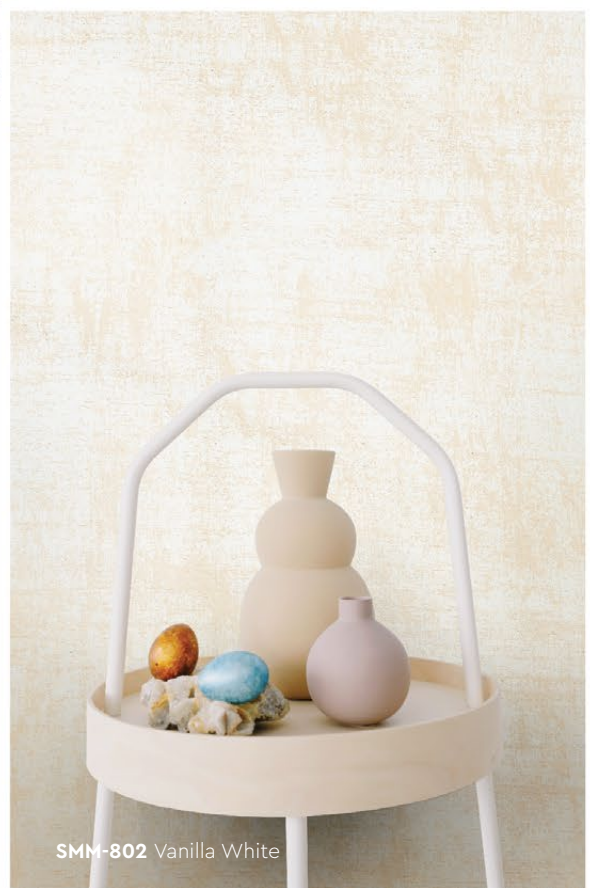
SMM-813 Rocky Grey



SMM-814 Dark Rust



SMM-814 Dark Rust



SMM-802 Vanilla White



SMM-811 Frost Grey

Strato® Merino

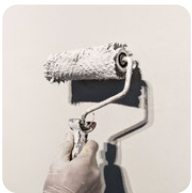
Application Technique

Application Video



Preparation:

- Cover the edges of surface that won't be painted by masking it with tape, paper or plastic.
- Clean up the wall surface to ensure it is free from dirt and dust.



1 Primer

Roll 2 layers of primer on the entire surface. Allow 30 minutes to dry between the layers.
(The primer can be diluted with maximum 5% of clean water)

Tool: Roller



2 Sanding

Sand the entire surface in circular motion to ensure the surface is smooth.

Tool: 600 Grit Sand Paper



3 Texture Coat

Texture Coat (First Layer)

First, brush texture coat horizontally on the surface. Let dry for 30 - 40 minutes.



Texture Coat (Second Layer)

Next, brush texture coat vertically on the surface. Let dry for 30 - 40 minutes.

Tool: Brush

IMPORTANT:

Color may vary on application technique & amount of material used.

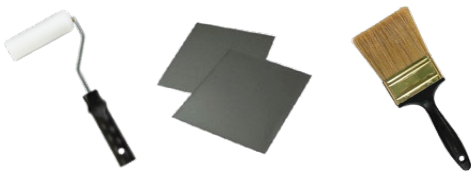


Packing Data

1 L	Primer
1 L	Texture Coat

Coverage (per set)

WALL	3 - 4 sqm
CEILING	2.5 - 3.5 sqm



Tools: Roller, Sand Paper (600 Grit) & Brush