

STRATO® Organza



SMO

SMO 701 – 717

A smooth textured pattern with rich and creamy metallic finish that is suitable for all interior designs.

Appearance

Low Sheen						High Sheen
Smooth Texture						Rough Texture
Matte						Metallic

Features



Low VOC
& Odor



Green Choice, Water
Based & Eco-friendly



Formaldehyde
& Lead Free



Easy Application
& DIY Friendly



Applicable
on Ceiling



Easy to
Touch Up



Easy
Maintenance



Metallic
Finish

• Interior use only



SMO-701 Floral Beige



SMO-702 Sandy Beige



SMO-703 Lotus Blossom



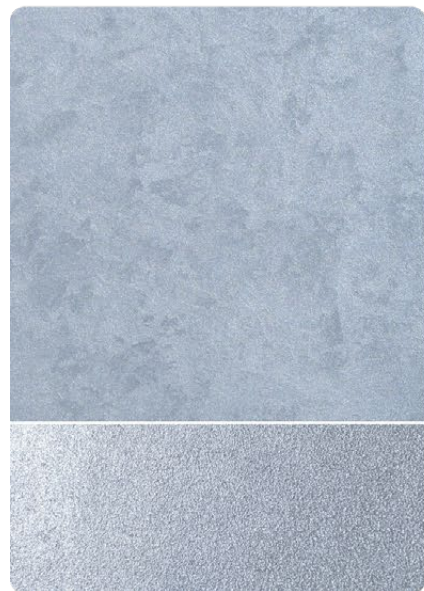
SMO-704 Lavender



SMO-705 Space Grey



SMO-706 Pewter Grey



SMO-707 Blue Ash



SMO-708 Antique Blue

All color shown are as close to the actual Suzuka® Strato® colors as modern printing techniques permit, nonetheless, there are still color/tone differences.

We highly recommend seeing actual samples before ordering.



SMO-703 Lotus Blossom



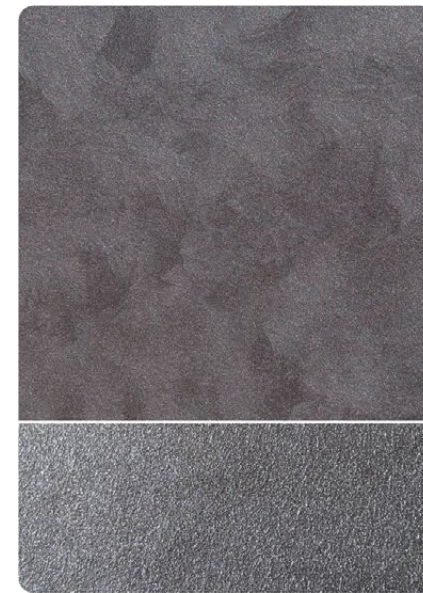


SMO-705 Space Grey

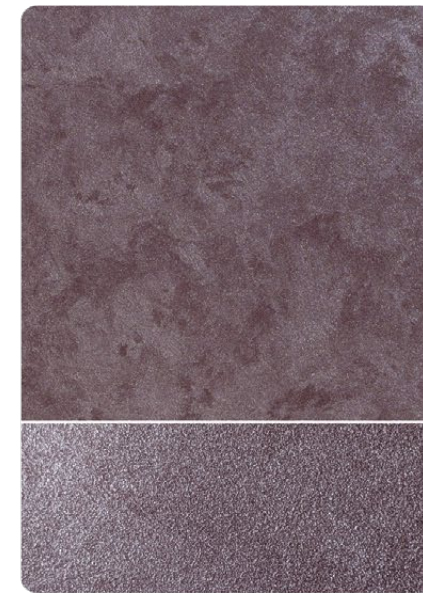
SMO-702 Sandy Beige

All color shown are as close to the actual Suzuka® Strato® colors as modern printing techniques permit, nonetheless, there are still color/tone differences.

We highly recommend seeing actual samples before ordering.



SMO-709 Lava Grey



SMO-710 Plum Violet



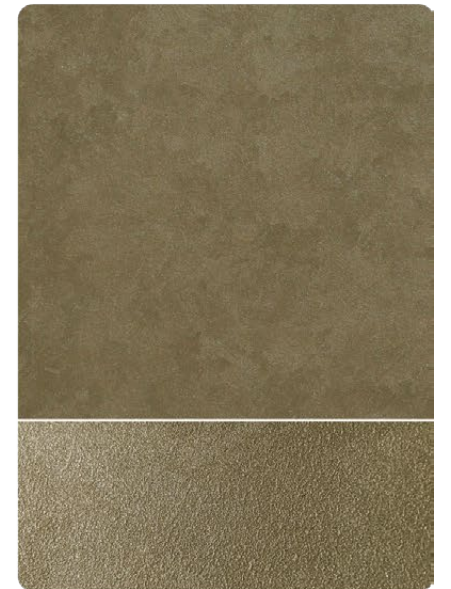
SMO-711 Dark Amber



SMO-712 Antique Wood



SMO-713 Pale Mustard



SMO-714 Olive Garden



SMO-715 Seal Grey



SMO-716 Fossil Grey



SMO-717 Sage Green



SMO-715 Seal Grey



SMO-713 Pale Mustard

SMO-714 Olive Garden

Strato® Organza

Application Technique

Application Video



Preparation:

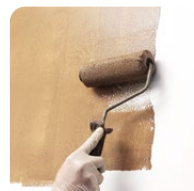
- Cover the edges of surface that won't be painted by masking it with tape, paper or plastic.
- Clean up the wall surface to ensure it is free from dirt and dust.

IMPORTANT:

Color may vary on application technique & amount of material used.



Tools: Roller, Sand Paper (600 Grit) Trowel & Piccolo Tool



1 Primer

Roll 2 layers of primer on the entire surface. Allow 30 minutes to dry between the layers.
(The primer can be diluted with maximum 5% of clean water)

Tool: Roller

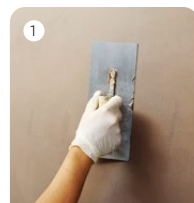


2 Sanding

Sand surface with sandpaper (600 grit) to ensure a smooth surface.

Tool: 600 Grit Sand Paper

Texture Coat Options



3A Texture Coat Piccolo Pattern

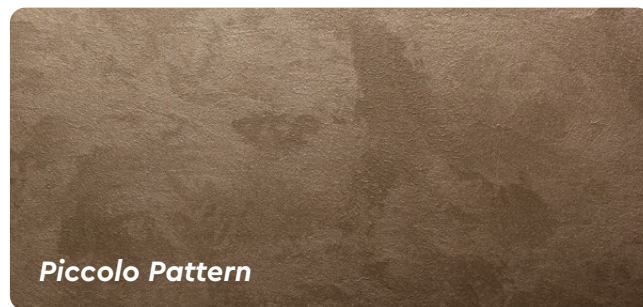
Texture Coat (First Layer)

(1) scrape texture coat evenly on the surface.
(2) Use piccolo tool to create texture effects by moving with random motion. Let dry for 30 to 40 minutes.

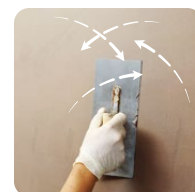
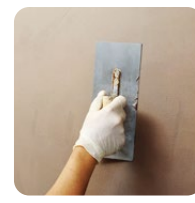
Texture Coat (Second Layer)

Repeat the steps for a second layer of texture coat. Let dry for 30 to 40 minutes.

Tool: Trowel & Piccolo Tool



Piccolo Pattern



3B Texture Coat Trowel Pattern

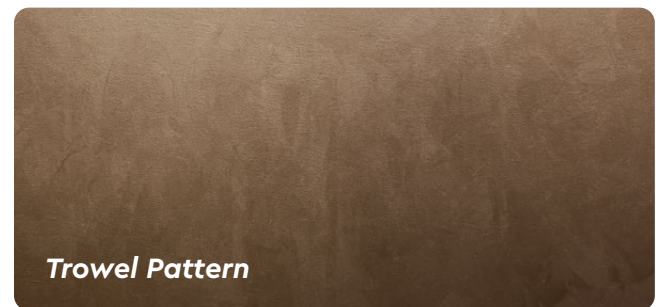
Texture Coat (First Layer)

Scrape texture coat evenly on the surface. Let dry for 30 to 40 minutes.

Texture Coat (Second Layer)

Scrape texture coat randomly on the surface to create texture. Let dry for 30 to 40 minutes.

Tool: Trowel



Trowel Pattern



Packing Data

1 L	Primer
1 L	Texture Coat

* Piccolo tool is sold separately

Coverage (per set)

WALL	6 - 7 sqm
CEILING	5 - 6 sqm